

The New Robo Cylinder that's 25mm x 25mm Super Slim Type is here!

RoboCylinder Super Slim Type

RCP2-RPA



Benefits

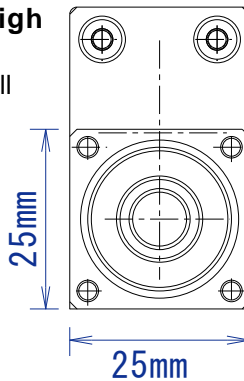
Super Slim size of 25mm wide and 25mm high

With a unit size of 25mm wide and 25mm high, it is now possible to install the unit through a small opening. It also becomes possible to make the size of the application smaller.

* The height of the motor is 42mm.

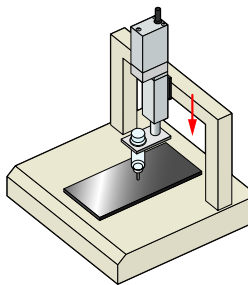
Convenient Functions of the Electric Cylinder

1. Maximum of 64 Positioning Points
2. Incremental Motion Function
3. Maximum Push Force of 100N
4. Halt Function / Zone Signaling

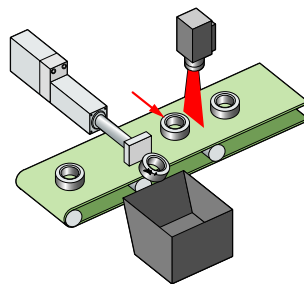


Application Examples

Miniature 3 axis combination

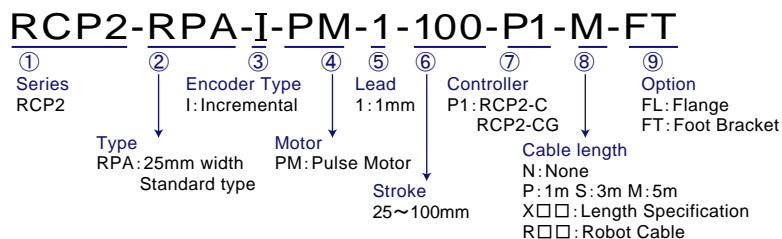


Small parts inspection

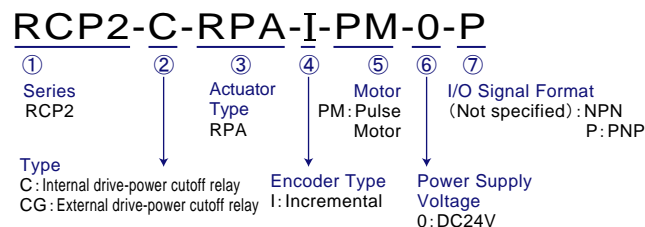


Model

Actuator Model

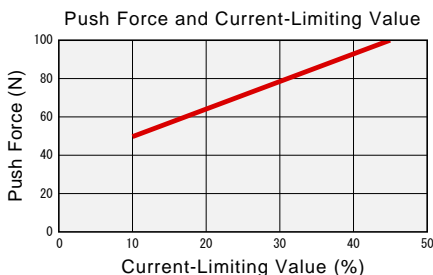


Controller Model



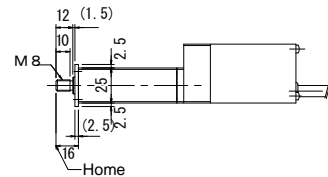
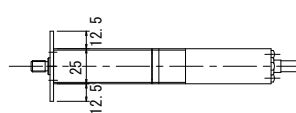
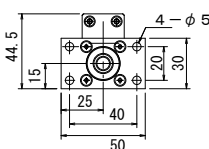
Push Force

Although the RCP2-RPA is an electric cylinder, it can continually push against a load just like an air cylinder. By adjusting the setting of the controller, it is possible to change the push force from 50N to a maximum of 100N.

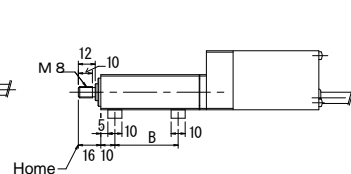
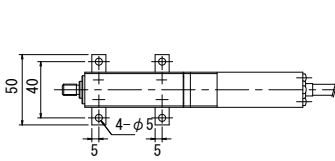
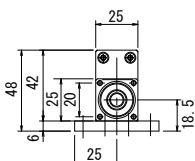


Options

Flange



Foot Bracket



RCP2-RPA

ROBO Cylinder Rod Type: Unit Width 25mm, Pulse Motor, Straight Shape

Type / Rod (25mm wide) Stroke / 25~100mm Load capacity / 7kg (horizontal)/2.5kg (vertical)



Model details Series Type Encoder type Motor Lead Stroke Applicable controller Cable length Options
 RCP2-RPA-I-PM-1-100-P1-S-FL

Model/Specifications

Model	Encoder type	Motor	Lead (mm)	Stroke 25mm increments (mm)	Speed (mm/s)	Load capacity (Note 1)		Maximum push force (N)
						Horizontal (kg)	Vertical (kg)	
RCP2-RPA-I-PM-1-①-P1-②-③	Incremental	Pulse motor	1	25~100	1~25	7	2.5	100

* In the above model names, ① indicates the stroke, ② the cable length and ③ the applicable options.

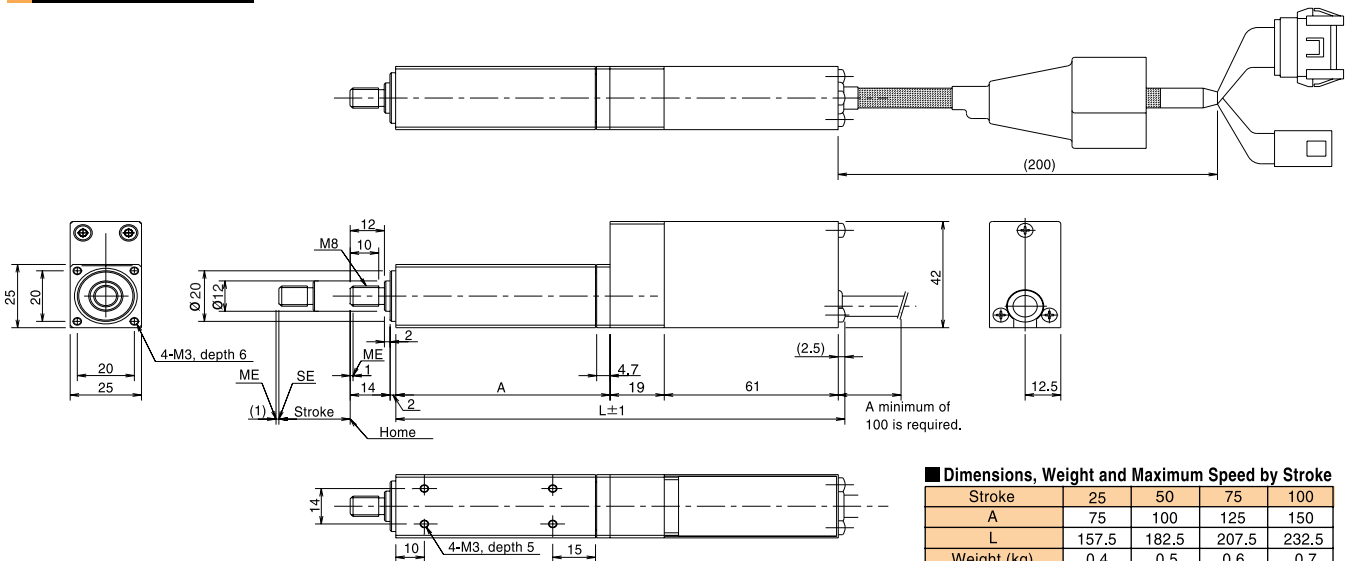
Options

Name	Model	Page
With flange	FL	-
With foot bracket	FT	-

Common Specifications

Drive system	Ball screw ϕ 6mm, rolled C10 (Ball screw is driven by a 1/2 ratio reduction gear)
Positioning Repeatability	\pm 0.02mm
Backlash	0.05mm or less
Guide	-
Travel Life	2,000km
Rod diameter	ϕ 12mm
Rod non-rotative accuracy	\pm 2.1°
Base	Material: Aluminum with white alumite treatment
Cable length (Note 2)	N: No cable, P: 1m, S: 3m, M: 5m, X□□: Length specification, R□□: Robot cable

Dimensions



Dimensions, Weight and Maximum Speed by Stroke

Stroke	25	50	75	100
A	75	100	125	150
L	157.5	182.5	207.5	232.5
Weight (kg)	0.4	0.5	0.6	0.7
Maximum speed (mm/s)	Lead 1: 25			

Applicable Controller Specifications

Applicable Controller	Maximum number of controlled axes	Compatible encoder type	Program operation	Positioner operation	Pulse-train control	Power-supply voltage	Page
RCP2-C	1 axis	Incremental	X	○	X	24VDC	-
RCP2-CG	1 axis		X	○	X		-



(Note 1) The load acceleration is 0.05G. When moving a load horizontally, use the guide together with the rod and radial load in a state where it does not catch.

(Note 2) The maximum cable length is 20m. Specify the desired length in meters (e.g., X08=8m).